

\$899,900 - 137 Magenta Crescent, Chestermere

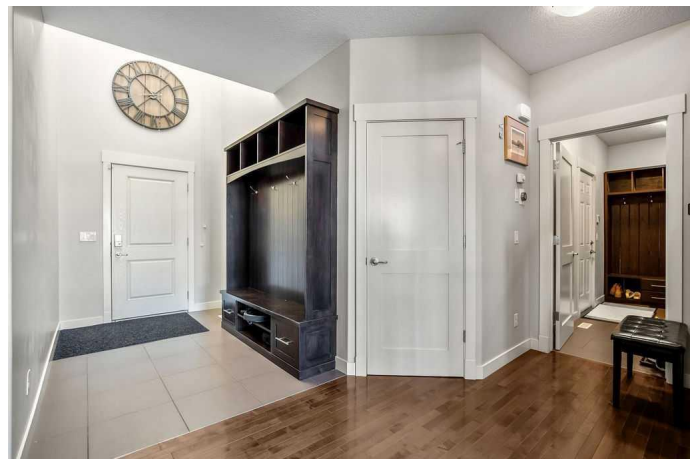
MLS® #A2263145

\$899,900

4 Bedroom, 4.00 Bathroom, 2,604 sqft
Residential on 0.12 Acres

Rainbow Falls, Chestermere, Alberta

****OPEN HOUSE SATURDAY NOV 1 from 12-2PM**** Tucked in one of the most sought-after locations in Chestermere, this stunning two-storey walkout backs directly onto the tranquil Rainbow Falls green space and creek-side pathway. Step outside your back gate to enjoy peaceful walks along the water, surrounded by mature trees and lush landscaping – a true outdoor retreat right at home. Inside, this fully finished residence impresses with thoughtful updates and high-end finishes throughout. The reimagined Chef™'s Kitchen now features brand-new stainless steel appliances, elegant granite countertops, custom maple cabinetry with soft-close drawers and under-cabinet lighting, plus a convenient walk-through pantry connecting to the mudroom. Whether preparing an intimate meal or hosting guests, this kitchen delivers both beauty and functionality. Soaring west-facing windows flood the main floor with natural light, framing picturesque views of the creek and park beyond. The inviting great room centers around a full-height stone fireplace – perfect for cozy evenings with family or friends. Upstairs; flowing new carpet, the spacious primary suite provides a true retreat, complete with a spa-inspired 5-piece ensuite featuring heated marble floors, a jetted marble-wrapped tub, dual vanities, and his-and-hers walk-in closets. The walkout lower level is beautifully designed with versatility in mind – featuring an impressive wet bar, built-in Murphy bed,



custom wine room, in-ceiling audio, and a sleek 4-piece bath with heated floors and steam shower. Ideal as a guest suite or entertainment space, itâ€™s fully equipped with separate laundry and security systems. Outdoors, the private fenced yard offers multiple gathering spaces â€“ a large deck for summer dining, a cozy fire pit area, and a concrete patio overlooking the natural green space and gently flowing creek. This home truly combines luxury living with the serenity of nature â€“ an exceptional balance of indoor comfort and outdoor beauty.

Built in 2010

Essential Information

MLS® #	A2263145
Price	\$899,900
Bedrooms	4
Bathrooms	4.00
Full Baths	3
Half Baths	1
Square Footage	2,604
Acres	0.12
Year Built	2010
Type	Residential
Sub-Type	Detached
Style	2 Storey
Status	Active

Community Information

Address	137 Magenta Crescent
Subdivision	Rainbow Falls
City	Chestermere
County	Chestermere
Province	Alberta
Postal Code	T1X 0K9

Amenities

Parking Spaces	4
Parking	Double Garage Attached
# of Garages	2

Interior

Interior Features	Bookcases, Closet Organizers, Double Vanity, Granite Counters, Kitchen Island, No Animal Home, No Smoking Home, Recessed Lighting, See Remarks, Vinyl Windows
Appliances	Bar Fridge, Dishwasher, Dryer, Electric Stove, Microwave, Range Hood, Refrigerator, See Remarks, Washer
Heating	Forced Air, Natural Gas
Cooling	None
Fireplace	Yes
# of Fireplaces	1
Fireplaces	Gas
Has Basement	Yes
Basement	See Remarks

Exterior

Exterior Features	BBQ gas line, Private Entrance
Lot Description	Backs on to Park/Green Space, Creek/River/Stream/Pond
Roof	Asphalt Shingle
Construction	Stone, Vinyl Siding, Wood Siding
Foundation	Poured Concrete

Additional Information

Date Listed	October 16th, 2025
Days on Market	18
Zoning	R1

Listing Details

Listing Office	RE/MAX First
----------------	--------------

Data is supplied by Pillar 9â„¢ MLSÂ® System. Pillar 9â„¢ is the owner of the copyright in its MLSÂ® System. Data is deemed reliable but is not guaranteed accurate by Pillar 9â„¢. The trademarks MLSÂ®, Multiple Listing ServiceÂ® and the associated logos are owned by The Canadian Real Estate Association (CREA) and identify the quality of services provided by real estate professionals who are members of CREA. Used under license.