

\$724,900 - 135 West Lakeview Passage, Chestermere

MLS® #A2260874

\$724,900

4 Bedroom, 4.00 Bathroom, 2,185 sqft
Residential on 0.12 Acres

Lakeview Landing, Chestermere, Alberta

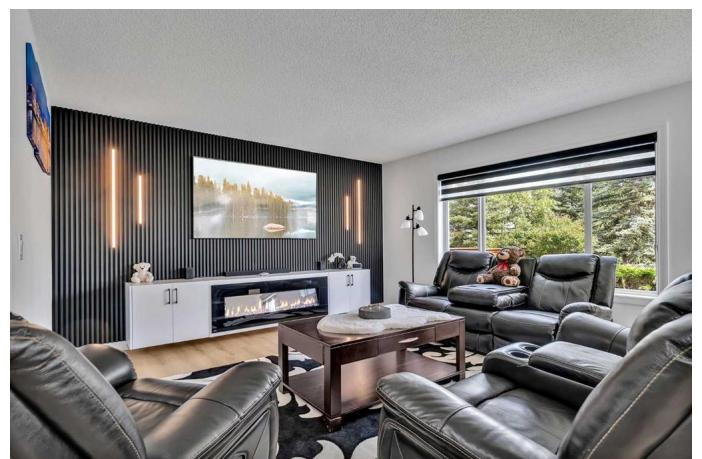
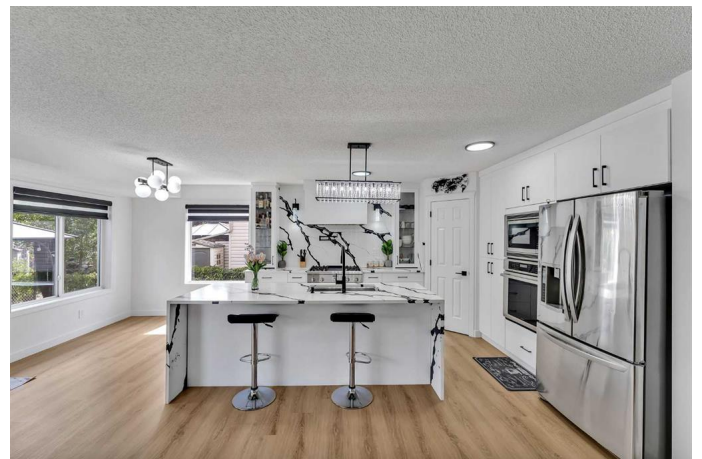
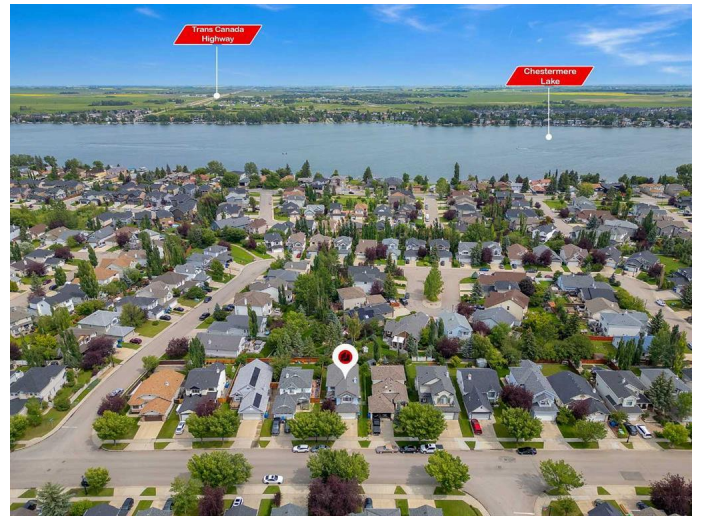
AMAZING RENOVATED KITCHEN| NEW
FLOORING & PAINT|LOVELY BACKYARD|

This beautifully updated home offers the perfect blend of modern living and outdoor tranquility, located in a mature, family-friendly neighborhood with scenic landscaping and mature trees. Just minutes away from Chestermere Lake, schools, shopping plazas and golf course, it offers unbeatable convenience for all lifestyles.

Step inside to discover a chef's dream kitchen, featuring high-end built-in appliances, sleek countertops, and plenty of space for meal prep and entertaining. The main level boasts an inviting living room with a stunning feature wall and an electric fireplace, creating a cozy ambiance. The spacious bonus room on the upper level is ideal for family movie nights or a home office.

Upstairs, you'll find 3 well-sized bedrooms including a luxurious primary suite with 5pc ensuite bath, plus an additional full bath for the family. The home's thoughtful renovations also include new flooring and fresh paint throughout.

The illegal basement suite is a hidden gem with a separate entrance, huge family room, 1 bedroom, 1 bathroom, and its own kitchen – perfect for guests or as a rental opportunity.



Enjoy the luxury of air conditioning during summer months, and spend your evenings relaxing in the private, landscaped backyard, where trees and greenery provide a peaceful retreat.

This home is truly a must-see. Don't miss your chance to call this stunning Chestermere property yours!

Built in 1999

Essential Information

MLS® #	A2260874
Price	\$724,900
Bedrooms	4
Bathrooms	4.00
Full Baths	3
Half Baths	1
Square Footage	2,185
Acres	0.12
Year Built	1999
Type	Residential
Sub-Type	Detached
Style	2 Storey
Status	Active

Community Information

Address	135 West Lakeview Passage
Subdivision	Lakeview Landing
City	Chestermere
County	Chestermere
Province	Alberta
Postal Code	T1X 1G8

Amenities

Parking Spaces	5
Parking	Double Garage Attached, Off Street
# of Garages	2

Interior

Interior Features	Ceiling Fan(s)
Appliances	Built-In Oven, Dryer, Gas Stove, Microwave, Range Hood, Refrigerator, Washer
Heating	Central, Forced Air, Electric
Cooling	Central Air
Fireplace	Yes
# of Fireplaces	1
Fireplaces	Electric, Living Room
Has Basement	Yes
Basement	Full

Exterior

Exterior Features	Garden
Lot Description	Back Yard, Garden, Landscaped, Many Trees, Rectangular Lot
Roof	Asphalt Shingle
Construction	Vinyl Siding
Foundation	Poured Concrete

Additional Information

Date Listed	September 29th, 2025
Days on Market	39
Zoning	R1

Listing Details

Listing Office	PREP Realty
----------------	-------------

Data is supplied by Pillar 9â„¢ MLSÂ® System. Pillar 9â„¢ is the owner of the copyright in its MLSÂ® System. Data is deemed reliable but is not guaranteed accurate by Pillar 9â„¢. The trademarks MLSÂ®, Multiple Listing ServiceÂ® and the associated logos are owned by The Canadian Real Estate Association (CREA) and identify the quality of services provided by real estate professionals who are members of CREA. Used under license.