

\$446,555 - 887 Keystone Meadows W, Lethbridge

MLS® #A2242392

\$446,555

4 Bedroom, 3.00 Bathroom, 1,059 sqft

Residential on 0.09 Acres

Copperwood, Lethbridge, Alberta

Beautifully maintained bi-level built by ASHCROFT homes master builders. Located on a quiet street, this home has tons of upgrades including all brand new stainless steel appliances, upgraded flooring tile , central air conditioning and a fully developed basement. With a detached double garage this property is 100% turn key. An absolute gem tucked in Copperwood, walking distance to the YMCA, Cavendish arena, Coalbanks elementary school, grocery store, restaurants and more...this house is a must see!

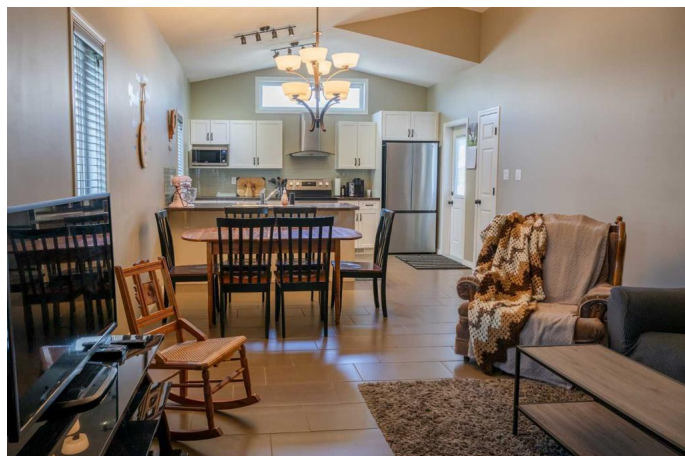
Built in 2012

Essential Information

MLS® #	A2242392
Price	\$446,555
Bedrooms	4
Bathrooms	3.00
Full Baths	3
Square Footage	1,059
Acres	0.09
Year Built	2012
Type	Residential
Sub-Type	Detached
Style	Bi-Level
Status	Active

Community Information

Address 887 Keystone Meadows W



Subdivision	Copperwood
City	Lethbridge
County	Lethbridge
Province	Alberta
Postal Code	T1J5E2

Amenities

Parking Spaces	3
Parking	Double Garage Detached
# of Garages	2

Interior

Interior Features	Kitchen Island, No Smoking Home, Open Floorplan, Walk-In Closet(s)
Appliances	Dishwasher, Electric Range, Garage Control(s), Microwave, Refrigerator, Washer/Dryer, Window Coverings
Heating	Forced Air, Natural Gas
Cooling	Central Air
Has Basement	Yes
Basement	Finished, Full, Partially Finished

Exterior

Exterior Features	Private Yard, Storage
Lot Description	Back Yard, Front Yard, Lawn, Pie Shaped Lot
Roof	Asphalt Shingle
Construction	Vinyl Siding, Wood Frame
Foundation	Poured Concrete

Additional Information

Date Listed	July 24th, 2025
Days on Market	53
Zoning	R-CL

Listing Details

Listing Office	MaxWell Canyon Creek
----------------	----------------------

Data is supplied by Pillar 9â„¢ MLSÂ® System. Pillar 9â„¢ is the owner of the copyright in its MLSÂ® System. Data is deemed reliable but is not guaranteed accurate by Pillar 9â„¢. The trademarks MLSÂ®, Multiple Listing ServiceÂ® and the associated logos are owned by The Canadian Real Estate Association (CREA) and identify the quality of services provided by real estate professionals who are members of CREA. Used under license.