

\$619,900 - 24 Paint Horse Crescent, Cochrane

MLS® #A2217857

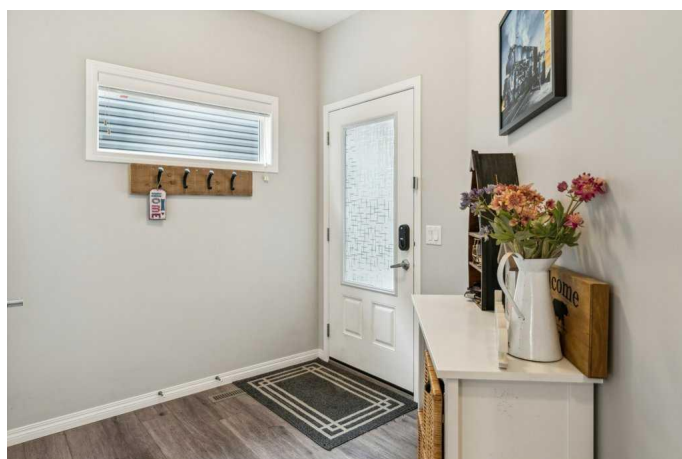
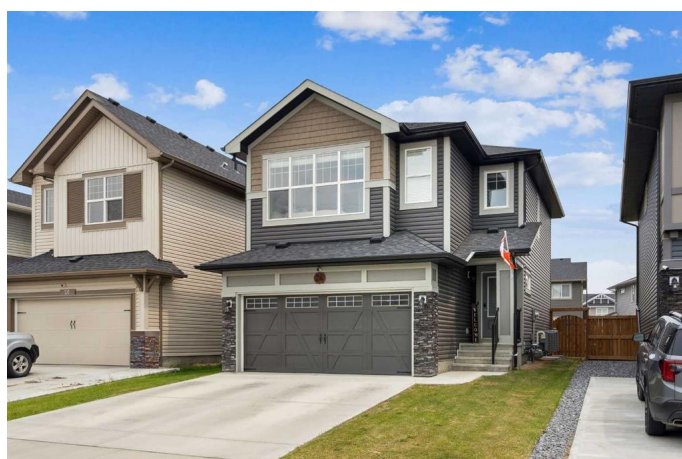
\$619,900

5 Bedroom, 3.00 Bathroom, 1,603 sqft

Residential on 0.09 Acres

Heartland, Cochrane, Alberta

Welcome to this stunning 2-storey home in the beautiful community of Heartland, offering 1600 sq. ft. PLUS fully developed lower level for a total of almost 2,200 square feet of living space. This fabulous condition home sits on a quiet lot with a massive, fully fenced backyard. The main level features 9' ceilings and an open floor plan, with a well-appointed kitchen showcasing quartz counters and stainless-steel appliances. The sleek vinyl plank flooring and spacious living room complete with an electric fireplace and ship-lap surround create a wonderful, entertaining main level. The double attached garage adds convenience and functionality and the central air conditioning is a welcome feature for those upcoming hot summer days. Upstairs, you'll find a rare 4-bedroom layout, including a master suite with a 4-piece ensuite and a walk-in closet with a window for added natural light. The upper level also includes a laundry room for ultimate convenience and a second 4-piece bath. The lower level is fully finished, offering a cozy TV area, bar area, and an additional 5th bedroom with an egress window. Brand NEW carpet on the lower stairs. This home is equipped with modern tech features, including a Google Nest thermostat, door camera, Yale keyless entry, and a garage cam. With the rear lower side of the home featuring no windows, there's an incredible opportunity to create a massive deck while still enjoying an expansive backyard, perfect for recreation or gardening. Why buy new when



this home already has the finished lower level, blinds, fence, rear landscaping, air conditioning, and more. Come and see why this property has such a tremendous value!!

Built in 2020

Essential Information

MLS® #	A2217857
Price	\$619,900
Bedrooms	5
Bathrooms	3.00
Full Baths	2
Half Baths	1
Square Footage	1,603
Acres	0.09
Year Built	2020
Type	Residential
Sub-Type	Detached
Style	2 Storey
Status	Active

Community Information

Address	24 Paint Horse Crescent
Subdivision	Heartland
City	Cochrane
County	Rocky View County
Province	Alberta
Postal Code	T4C 2V7

Amenities

Parking Spaces	4
Parking	Double Garage Attached
# of Garages	2

Interior

Interior Features	Breakfast Bar, Kitchen Island, No Smoking Home, Open Floorplan
Appliances	Central Air Conditioner, Dishwasher, Dryer, Garage Control(s), Gas Stove, Microwave Hood Fan, Refrigerator, Washer, Window Coverings

Heating	Central, Forced Air
Cooling	Central Air
Fireplace	Yes
# of Fireplaces	1
Fireplaces	Electric
Has Basement	Yes
Basement	Finished, Full

Exterior

Exterior Features	Private Yard
Lot Description	Back Yard, Interior Lot, Lawn, Level, Rectangular Lot
Roof	Asphalt Shingle
Construction	Wood Frame
Foundation	Poured Concrete

Additional Information

Date Listed	May 5th, 2025
Days on Market	42
Zoning	R-LD

Listing Details

Listing Office	RE/MAX House of Real Estate
----------------	-----------------------------

Data is supplied by Pillar 9â„¢ MLS® System. Pillar 9â„¢ is the owner of the copyright in its MLS® System. Data is deemed reliable but is not guaranteed accurate by Pillar 9â„¢. The trademarks MLS®, Multiple Listing Service® and the associated logos are owned by The Canadian Real Estate Association (CREA) and identify the quality of services provided by real estate professionals who are members of CREA. Used under license.