

# \$849,900 - 159 Belvedere Crescent Se, Calgary

MLS® #A2200350

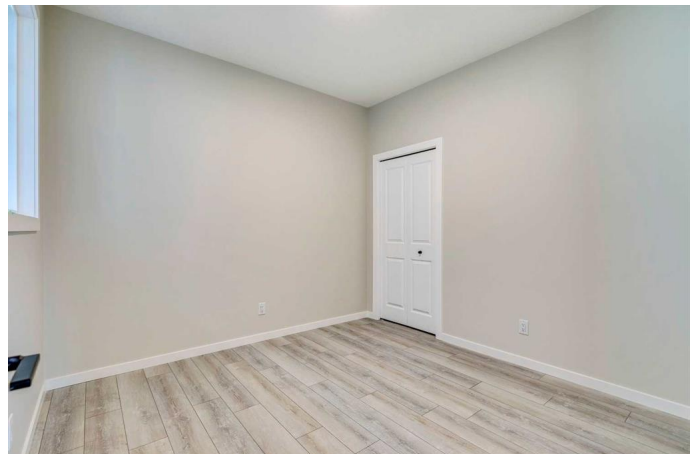
**\$849,900**

3 Bedroom, 3.00 Bathroom, 2,238 sqft

Residential on 0.08 Acres

Belvedere., Calgary, Alberta

Welcome to this stunning new build by Crystal Creek Homes, the Wyatt model, which offers the perfect blend of modern style and thoughtful practicality. This home features, Main floor 4th bedroom, 2nd prep kitchen with additional stove and sink, side entrance that could be used for a legal basement suite with city approval and a double front-attached garage. Inside, you'll find soaring high ceilings and an open-concept floor plan that allows for effortless flow and an abundance of natural light. The spacious living area is highlighted by a cozy gas fireplace, providing warmth and comfort. The chef's kitchen is a true centrepiece, complete with a large kitchen island, a pantry for added storage, and high-end finishes throughout. The mudroom offers a convenient transition from the garage, while the prep kitchen provides additional space for cooking and organization. Step outside to the pressure-treated deck, perfect for outdoor entertaining or relaxing while enjoying the east-facing views of the backyard. This home is ideally located near the upcoming new elementary school and the East Hills Commercial Centre, with easy access to Costco, Walmart, movie theater, and rapid transit to downtown Calgary. Don't miss the opportunity to make this brand-new home yours! This home is currently under construction and will be complete in the summer 2025. These photos were taken from an exact Wyatt design built in another neighbourhood. Please visit the show home at



272 Belvedere Drive to view similar built home  
and get permission for site visit of this address.  
Monday - Thursday 2-8 pm and Saturday -  
Sunday 12- 5 pm.

Built in 2025

**Essential Information**

MLS® #	A2200350
Price	\$849,900
Bedrooms	3
Bathrooms	3.00
Full Baths	2
Half Baths	1
Square Footage	2,238
Acres	0.08
Year Built	2025
Type	Residential
Sub-Type	Detached
Style	2 Storey
Status	Active

**Community Information**

Address	159 Belvedere Crescent Se
Subdivision	Belvedere.
City	Calgary
County	Calgary
Province	Alberta
Postal Code	T2A 7M5

**Amenities**

Parking Spaces	4
Parking	Double Garage Attached
# of Garages	2

**Interior**

Interior Features	High Ceilings, Kitchen Island, Open Floorplan, Pantry
Appliances	Dishwasher, Dryer, Garage Control(s), Refrigerator, Stove(s), Washer
Heating	Forced Air

Cooling	None
Fireplace	Yes
# of Fireplaces	1
Fireplaces	Gas
Has Basement	Yes
Basement	Full, Unfinished

## Exterior

Exterior Features	Private Yard
Lot Description	See Remarks
Roof	Asphalt Shingle
Construction	Composite Siding, Wood Frame
Foundation	Poured Concrete

## Additional Information

Date Listed	March 11th, 2025
Days on Market	96
Zoning	TBD

## Listing Details

Listing Office	eXp Realty
----------------	------------

Data is supplied by Pillar 9â„¢ MLSÂ® System. Pillar 9â„¢ is the owner of the copyright in its MLSÂ® System. Data is deemed reliable but is not guaranteed accurate by Pillar 9â„¢. The trademarks MLSÂ®, Multiple Listing ServiceÂ® and the associated logos are owned by The Canadian Real Estate Association (CREA) and identify the quality of services provided by real estate professionals who are members of CREA. Used under license.